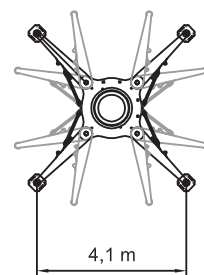
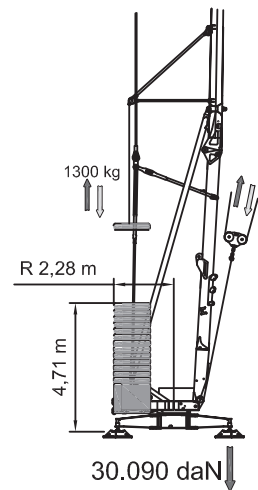


	400V (±10%) 50 Hz	18kVA				
	m/l'	▶ 6,3	▶▶ 21	▶▶▶ 31	▶▶▶▶ 48	
	kg	4000	4000	1400	1400	
15 (Inverter)						
	m/l'	▶ 17.8	▶▶ 28.6	▶▶▶ 53.5 (↗39.3)		
	kW	3 (Inverter)				
	n/l'	▶ 0.17	▶▶ 0.42	▶▶▶ 0.85		
	kW	3,7 (Inverter)				
	min	▶ 12		15.240 kg		5.200 kg + 16.900 kg
	kW	3				
	5200 kg	2600 kg	0 kg			
P1	8750 kg 8020 kg*	6616 kg 5916 kg*	4483 kg 3811 kg*			
P2	11690 kg 12420 kg*	11224 kg 11924 kg*	10757 kg 11429 kg*			



Alle technischen Angaben ohne Gewähr, Irrtümer und Änderungen vorbehalten.  
All technical data is without guarantee, errors and changes are reserved.

Am Dornbusch 10  
64390 Erzhausen  
www.eurogru.de

Telefon: +49 (0) 6150 13440  
Fax: +49 (0) 6150 7002  
Email: kontakt@eurogru.de

**EUROGRU**<sup>®</sup>  
BAUKRANE SEIT 1962