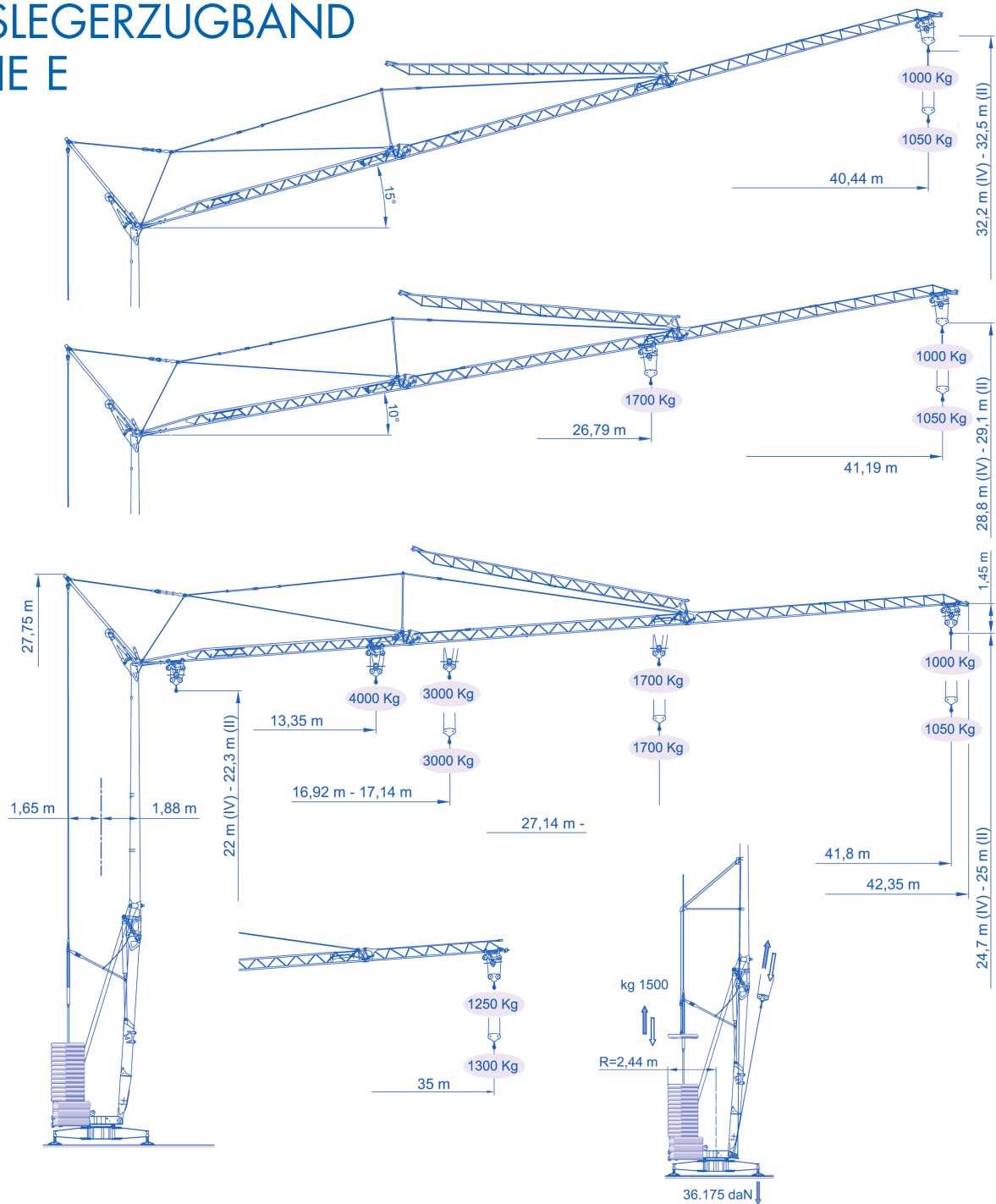




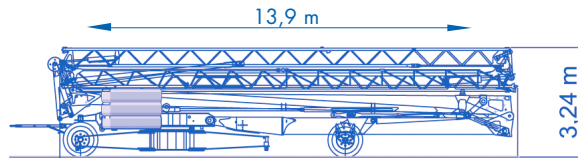
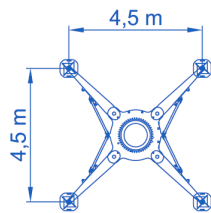
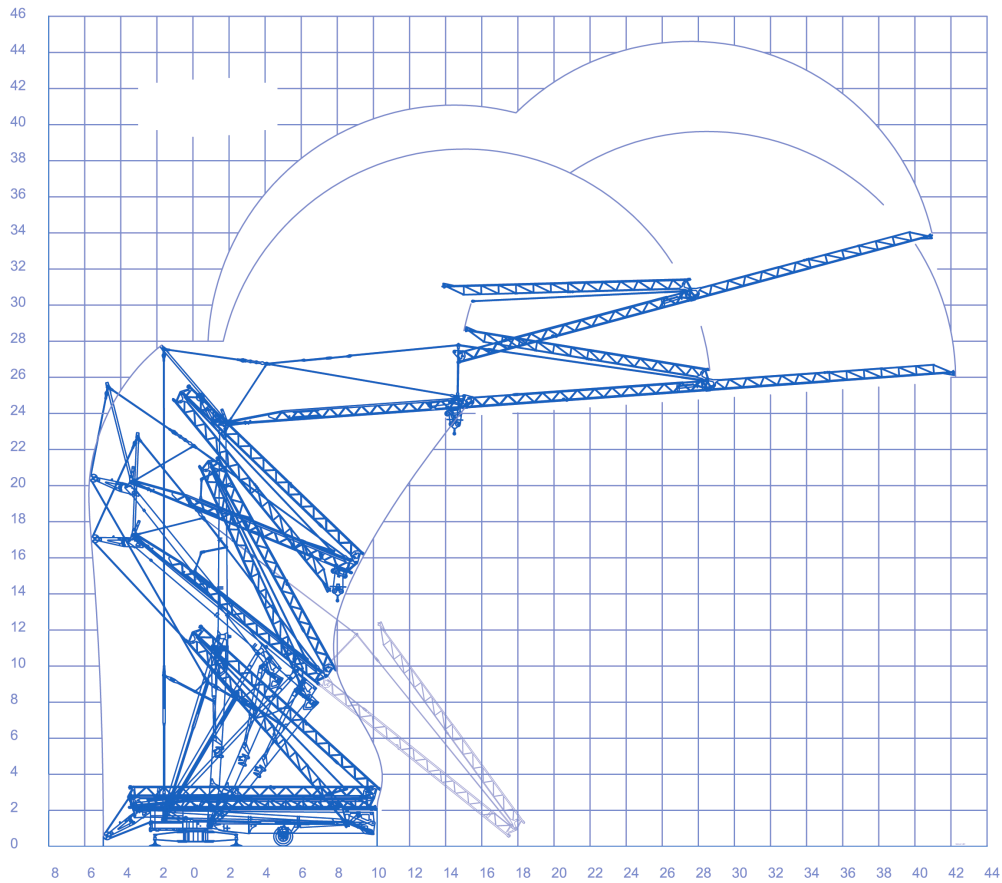


UNTENDREHER AUSLEGERZUGBAND SERIE E



| | | | | | | | | | |
|--|------|------|------|------|------|------|------|------|------|
|  Kg | 4000 | 3775 | 3209 | 2784 | 2454 | 2188 | 1971 | 1790 | 1637 |
|  m | 13,3 | 14 | 16 | 18 | 20 | 22 | 24 | 26 | 28 |
|  Kg | 1505 | 1391 | 1292 | 1204 | 1125 | 1055 | 1000 | | |
|  m | 30 | 32 | 34 | 36 | 38 | 40 | 41,8 | | |



| | | | | |
|--|---|---|----------|---|
| | m/min 8 - 4 20 - 10 46 - 23 56 - 28 | kg 2000 - 4000 2000 - 4000 1200 - 2400 800 - 1600 | kw 11 | TRIFASE TRIFASICA TRIPHASEE THREE-PHASE DREHSTROM |
| | m/min 0 - 0,75 | | kw 3 | v 400 |
| | m/min 17,3 28,6 53,3 | | kw 3 | MAX. POWER KVA 12 |

EUROGRU®

Am Dornbusch 10, 64390 Erzhausen

Telefon +49 6150 13440

Fax +49 6150 7002