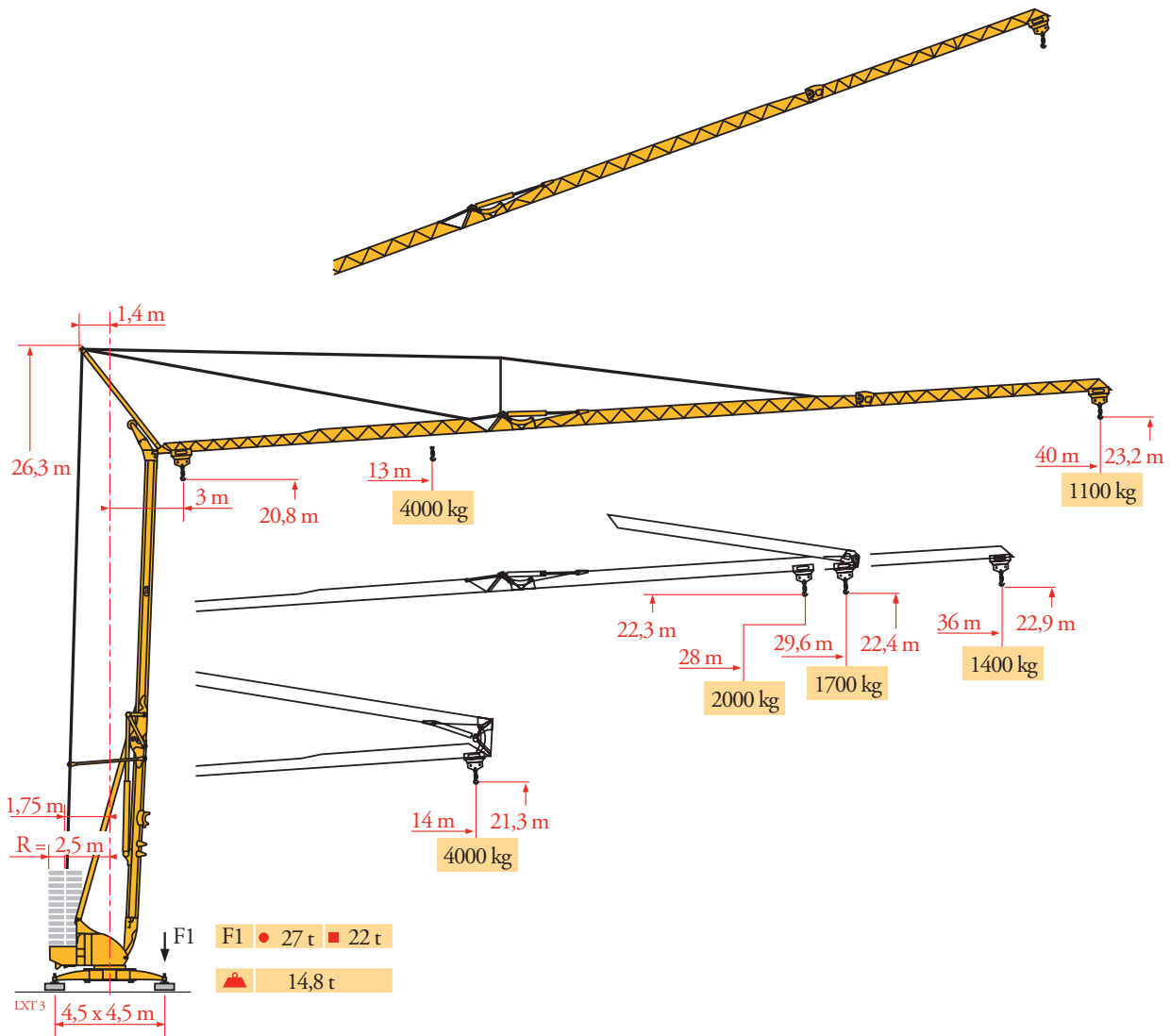
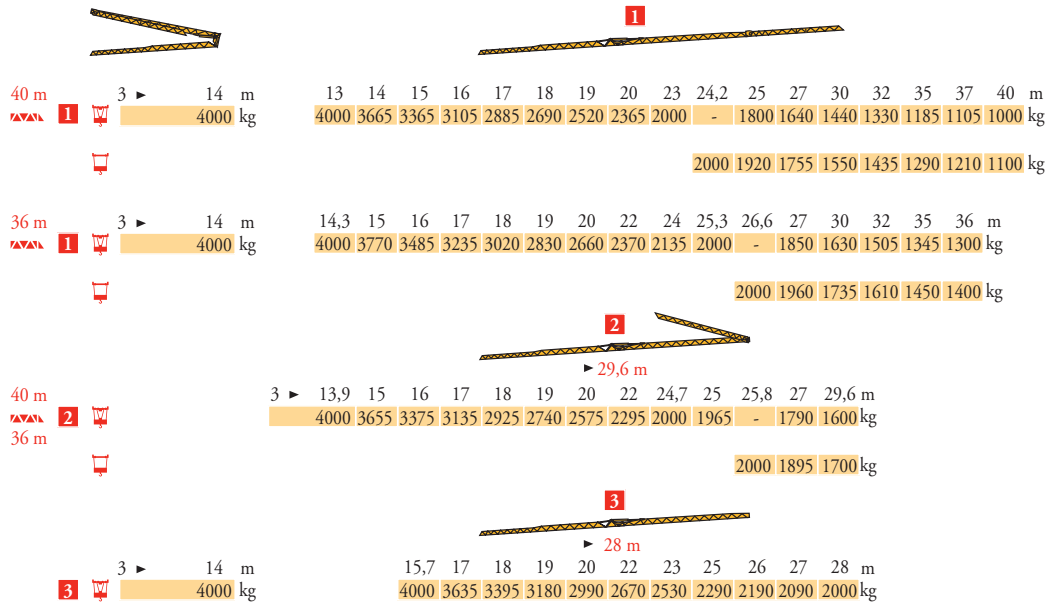


Potain Igo 50



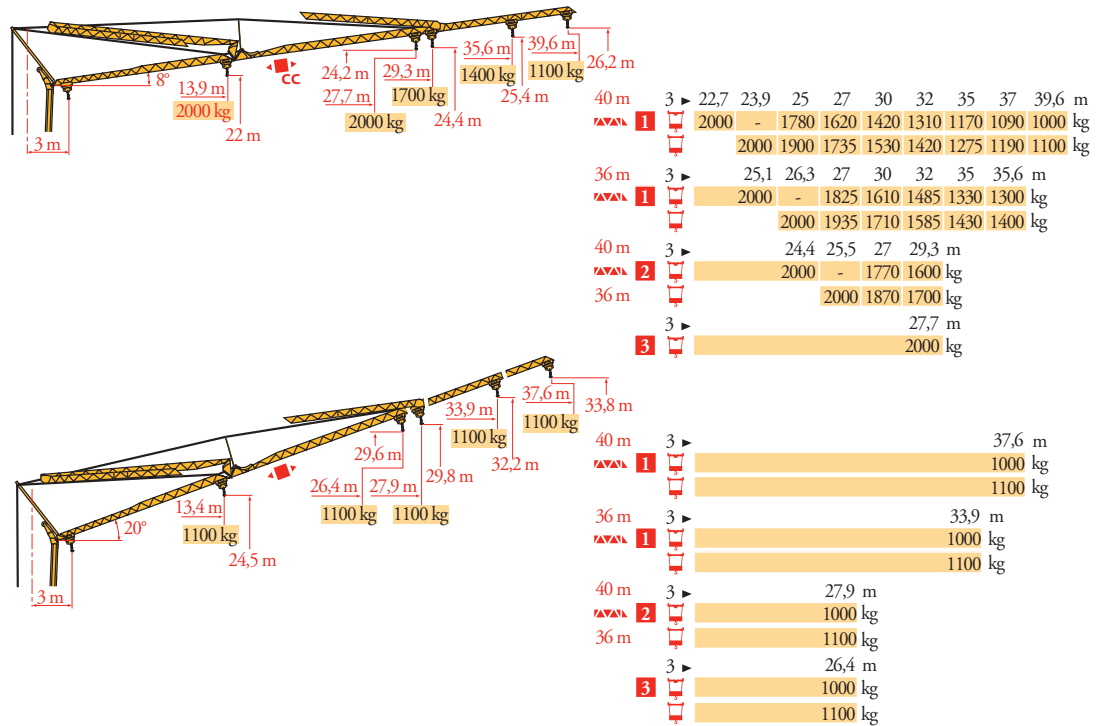
Courbes de charges
Lastkurven
Load diagrams
Curvas de cargas
Curve di carico
Curva de cargas
Диаграммы
грузоподъемностей

LXT 4



Flèche relevée
Ausleger in
Steilstellung
Luffing jib
Flecha izada
Braccio impennato
Lança inclinada
Маховая стрела

LXT 4



FR
Chariot distributeur
Chariot distributeur et
courbes de charges
Réactions en service
Réactions hors service
A vide sans lest (ni train de
transport) avec flèche et
hauteur maximum

DE
Verfahrbare Laufkatze
Verfahrbare Laufkatze und
Lastkurven
Reaktionskräfte in Betrieb
Reaktionskräfte außer
Betrieb

Ohne Last, Ballast (und
Transportachse), mit
Maximalausleger und
Maximalhöhe

EN
Traversing trolley
Traversing trolley and load
diagrams
Reactions in service
Reactions out of service

Without load, ballast (or
transport axes), with
maximum jib and
maximum height

ES
Carro distribuidor
Carro distribuidor y curvas
de cargas
Reacciones en servicio
Reacciones fuera de servicio

Sin carga, sin lastre, (ni tren
de transporte), flecha y
altura máxima

IT
Carrellino distributore
Carrellino distributore e
curve di carico
Reazioni in servizio
Reazioni fuori servizio

A vuoto, senza zavorra (ne
assali di trasporto) con
braccio massimo e altezza
massima

PT
Carro distribuidor
Carro distribuidor e curva de
cargas
Reações em serviço
Reações fora de serviço

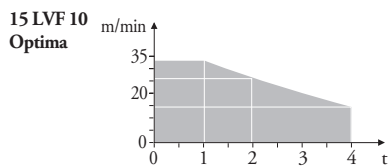
Sem carga (nem trem de
transporte) - sem lastro com
lança e altura máximas

RU
Грузовая тележка
Грузовая тележка и диаграммы
грузоподъемностей
Реакции при работе
Реакции в покое
Вес без груза, балласта (или
транспортных осей),
с максимальной длиной стрелы и
максимальной высотой

Mécanismes
Antriebe
Mechanisms
Mecanismos
Meccanismi
Mecanismos
Механизмы

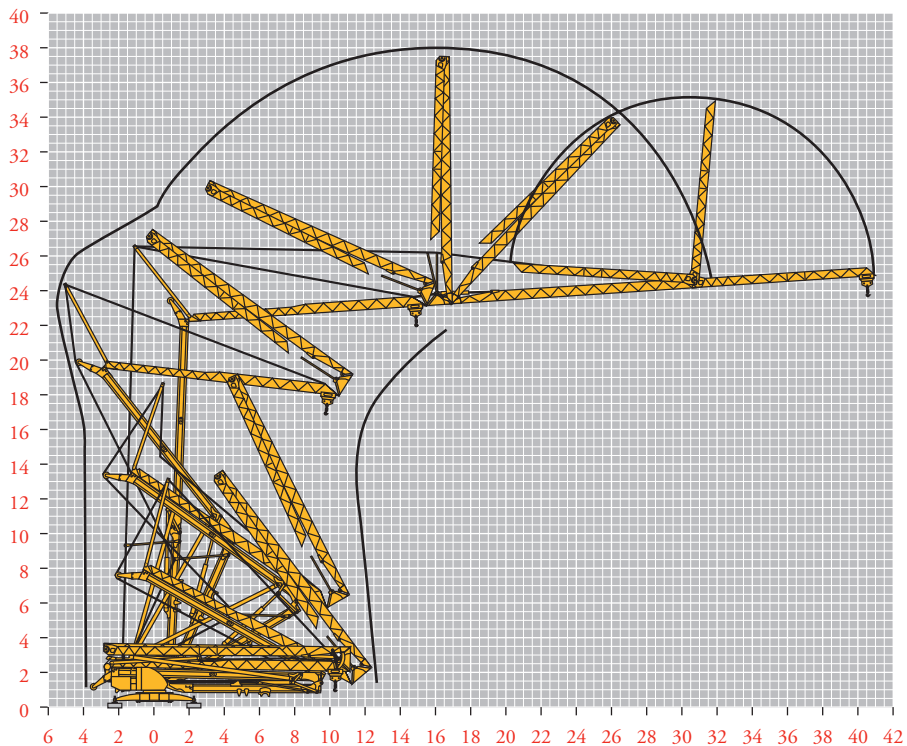
LXT5

| | | 🛒 | | | | | 🛒 | | | | | ch - PS hp | kW | |
|---|---------------------|------------------------|--|------|--------|------|--------------------|------|------|------|------|---------------|-----|----|
| 🔺 | 15 LVF 10 Optima | m/min | 3,6 | 18 | 30 | 49 | 66 | | | | | | 15 | 11 |
| | | kg | 2000 | 2000 | 2000 | 1100 | 500 | | | | | | | |
| | | m/min | 3,6 | 18 | 30 | 54 | 66 | 1,8 | 8,9 | 15 | 27 | 33 | | |
| | | kg | 2000 | 2000 | 2000 | 1000 | 500 | 4000 | 4000 | 4000 | 2000 | 1000 | | |
| 🔲 | 3 DVF5 | m/min | 19 - 45 (0 → 1000 kg) - 19 - 41 (1000 → 4000 kg) | | | | | | | | | 3 | 2,2 | |
| 🌀 | RVF+ 51 | tr/min U/min rpm | 0 → 0,8 | | | | | | | | | 5,5 | 4 | |
| | | CEI 38 | 🔲 | | IEC 38 | | kVA | | | | | | | |
| | | 400 V (+6% -10%) 50 Hz | | | | | 15 LVF 10 : 23 kVA | | | | | | | |



Montage
Montage
Erection
Montaje
Montaggio
Montagem
Монтаж

LXT3



FR

Leverage
Distribution
Orientation

DE

Heben
Katzfahren
Schwenken

EN

Hoisting
Trolleying
Slewing

ES

Elevación
Distribución
Orientación

IT

Sollevamento
Distribuzione
Rotazione

PT

Elevação
Distribuição
Rotação

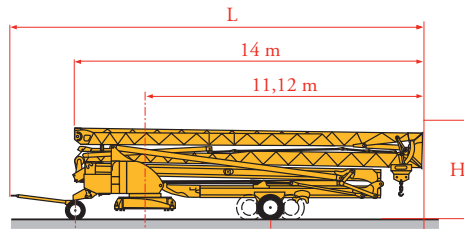
RU

Подъем
Перемещение каретки
Поворот

Transport
 Transport
 Transport
 Transporte
 Transporte
 Транспортировка

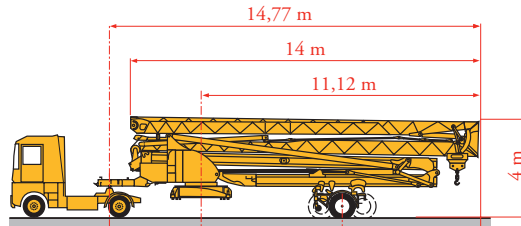
LXT 6

- DJ100/S120 ○
- DJ105/S125
- DJ126M/S125
- DJ126M/S215M



| | L | | | H | L |
|--------------|--------|--------|--------|--------|---------|
| DJ100/S120 | 2,75 m | 5,25 m | 5,87 m | 3,57 m | 16,39 m |
| DJ105/S125 | 2,75 m | 5,25 m | 5,87 m | 3,57 m | 16,39 m |
| DJ126M/S125 | 2,75 m | 5,25 m | 5,87 m | 3,57 m | 16,96 m |
| DJ126M/S215M | 3,55 m | 4,93 m | 6,19 m | 4 m | 17,75 m |

- SL122/J215M
- SL121/J135
- SL121/S215M



| | | | |
|-------------|--------|--------|--------|
| SL122/J215M | 3,65 m | 4,93 m | 6,19 m |
| SL121/J135 | 3,65 m | 5,88 m | 5,24 m |
| SL121/S215M | 3,65 m | 4,93 m | 6,19 m |

FR

○ Chantier

DE

Baustelle

EN

Site

ES

Obra

IT

Cantiere

PT

Estaleiro

RU

По строительной площадке



Document commercial non contractuel. Pour toute information technique se référer à la notice correspondante.

Unverbindliches Vertriebsdokument. Für technische Informationen, siehe die entsprechenden Anweisungen.

This commercial document is not legally binding. For any technical information, please refer to the corresponding instructions.

Documento commercial no contractual. Para cualquier información técnica, ver la noticia correspondiente.

Documento commerciale non vincolante, per tutte le informazioni tecniche fare riferimento al catalogo istruzioni.

Documento comercial não contratual. Para qualquer informação técnica complementar consultar as respectivas instruções.

Этот коммерческий документ не является юридически обязательным. Для получения технической информации, см. соответствующие инструкции.



Manitowoc - Americas - World Headquarters

2400 S. 44th Street • Manitowoc • WI 54220 USA
 Tel: +1 920 684 4410 • Fax: +1 920 652 9778

Manitowoc - Europe, Middle East & Africa

Manitowoc France SAS
 18, rue de Charbonnières B.P. 173 • 69132 ECULLY Cedex • FRANCE
 Tel: +33 (0)4 72 18 20 20 • Fax: +33 (0)4 72 18 20 00

Manitowoc - Asia Pacific

16F Xu Hui Yuan Building,
 1089 Zhongshan No.2 Road (S) • Shanghai 200030 China
 Tel: +86 21 6457 0066 • Fax: +86 21 6457 4955